

BONDING GROUT NOTES

The deck surface must be thoroughly sandblasted and cleaned to remove all dust or loose materials immediately before bonding grout is placed.

Deck surface to be surface dry with no standing water in pockets or low areas when bonding grout is applied.

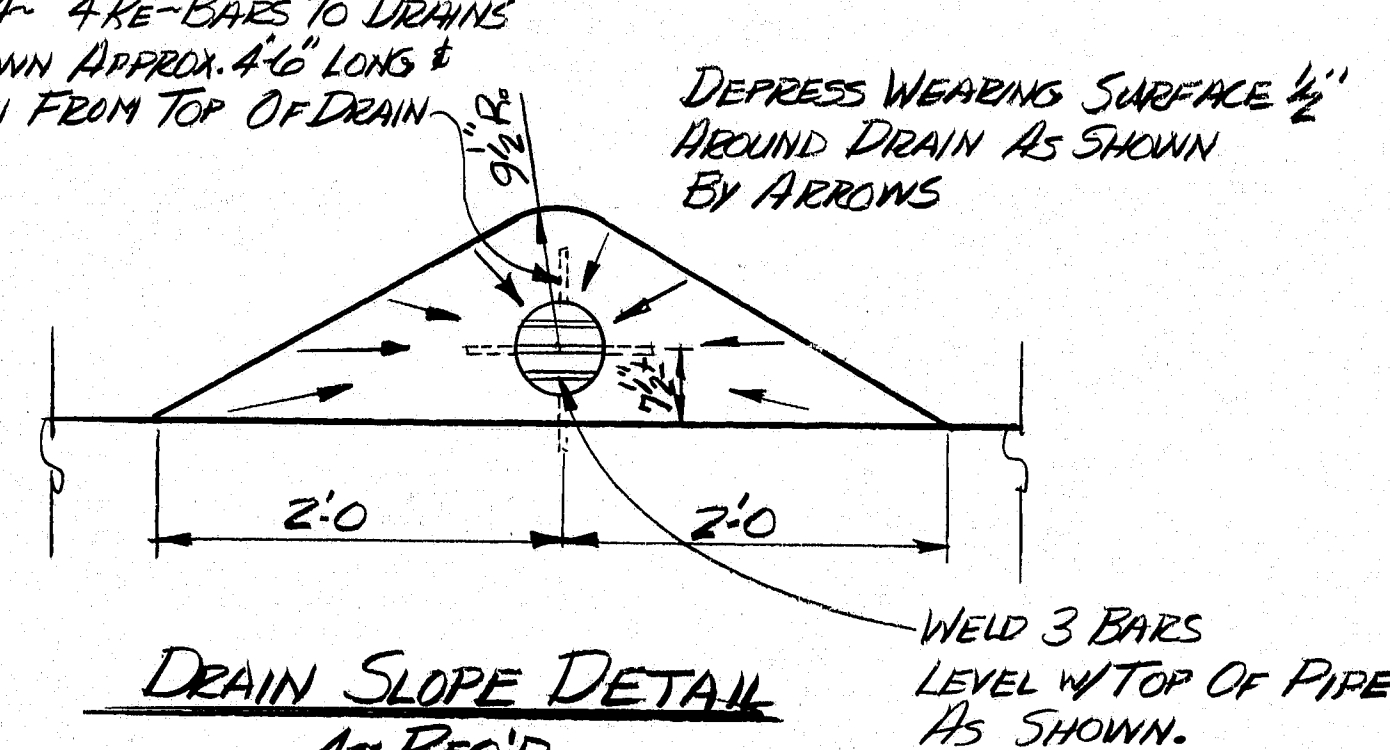
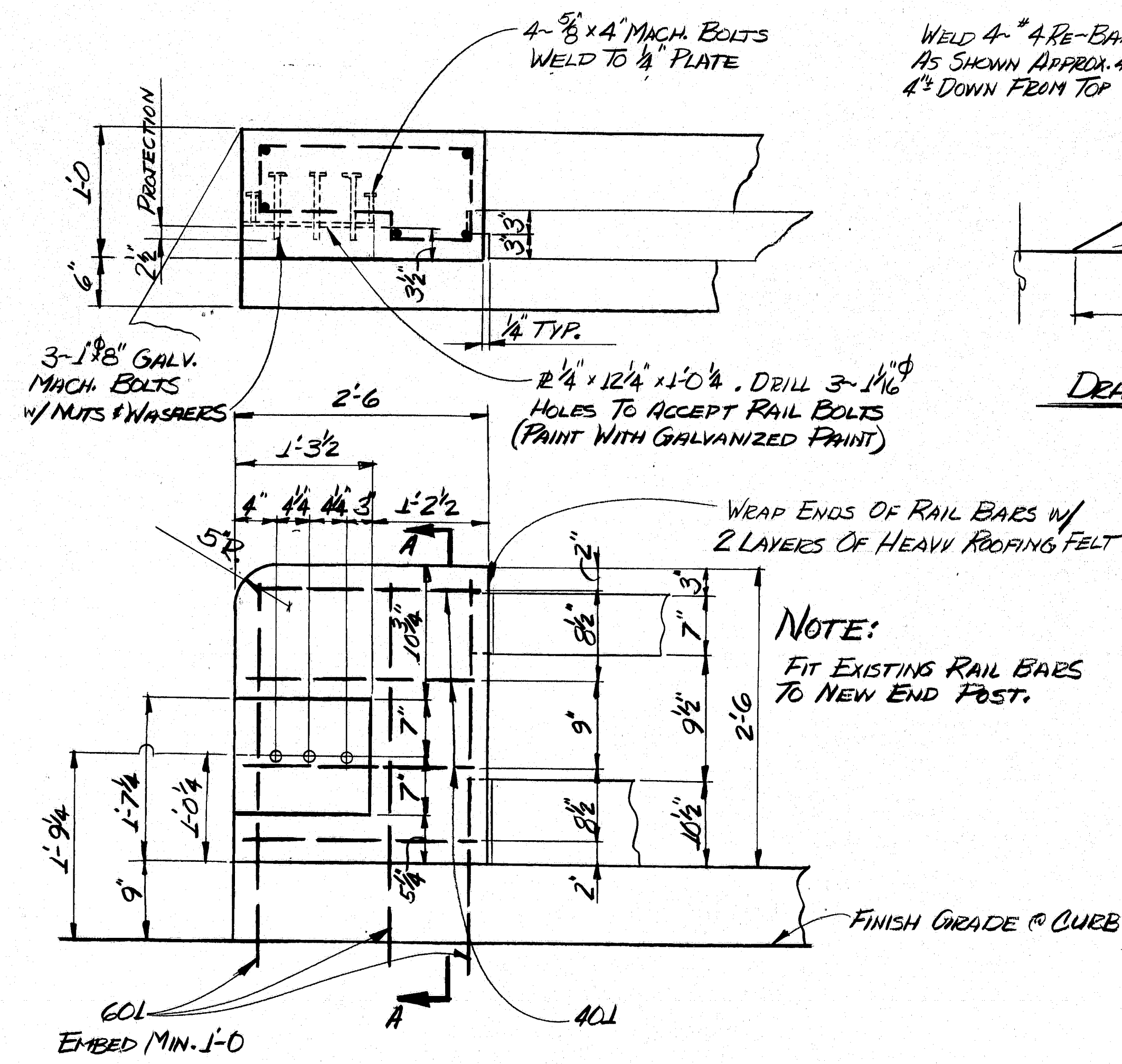
The bonding grout shall consist of equal parts by weight of Portland Cement and concrete sand with the plus #8 material removed and mixed with enough water to give a thick, creamy consistency.

Bonding grout to be evenly broomed onto the concrete surface ensuring that the entire surface, including face of curb to the finish grade of the wearing surface, is coated and that no excess grout collects in low spots or pockets. Grout shall be thoroughly broomed under and around reinforcing bars.

Rate of application must be controlled so that the grout does not dry before the new concrete is placed.

GENERAL NOTES

1. Remove existing wearing surface.
2. If main steel is exposed, concrete should be removed under the steel to a depth of 1" minimum.
3. Blast clean the slab before any placement of bonding grout or concrete. NOTE: SLAB IS TO BE SURFACE DRY BEFORE PLACEMENT OF BONDING GROUT.
4. Broom on a layer of bonding grout just prior to placing concrete. See note this sheet for bonding grout specifications.
5. Concrete to be cured using burlap and water or other approved methods.
6. Concrete to be Class "Y" and aggregate to be crushed ledge.
7. Minimum cover to be 2" unless otherwise noted.
8. Chamfer all exposed edges 1/4" unless otherwise noted.

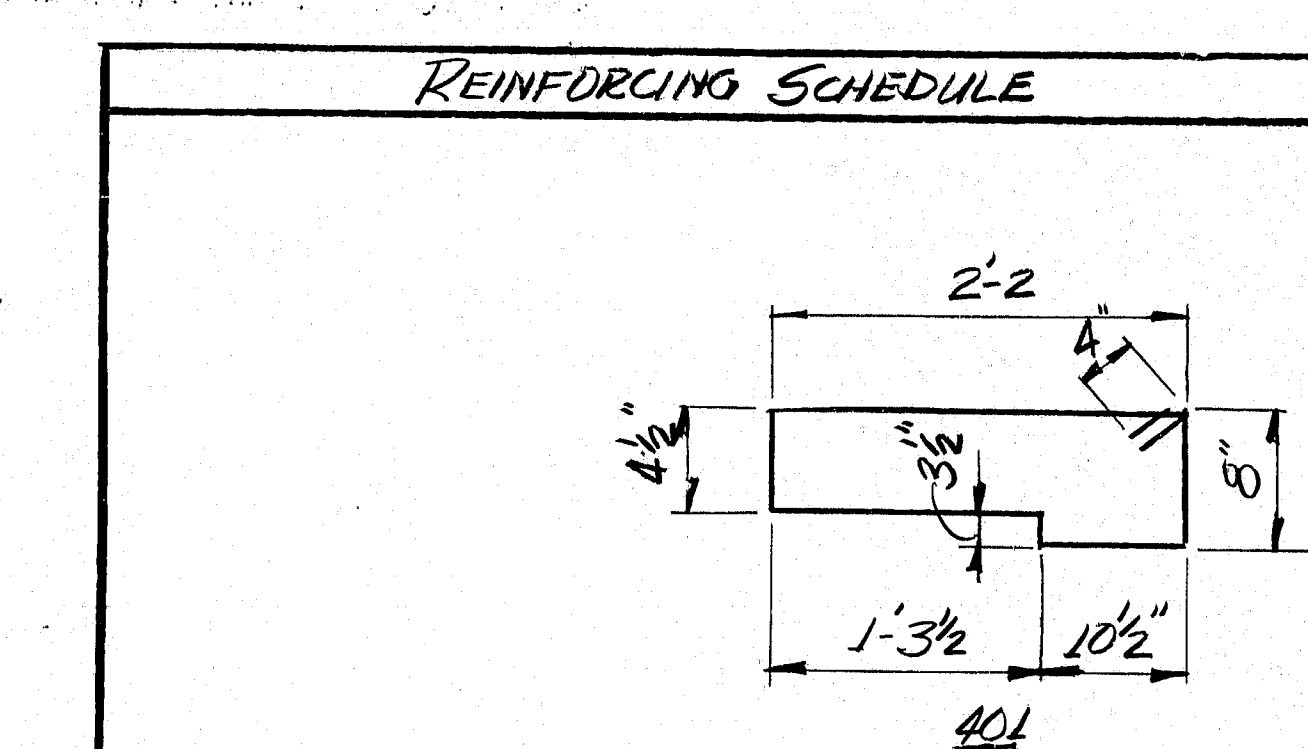


SCOPE OF WORK

REMOVE EXISTING WEARING SURFACE. FILL EXISTING DRAINS W/ CONCRETE. INSTALL NEW DRAINS. PLACE NEW BONDED CONCRETE W.S. REPLACE EXISTING END POSTS WITH NEW CONCRETE END POSTS. REPAIR CURBS & RAILS AS NECESSARY.

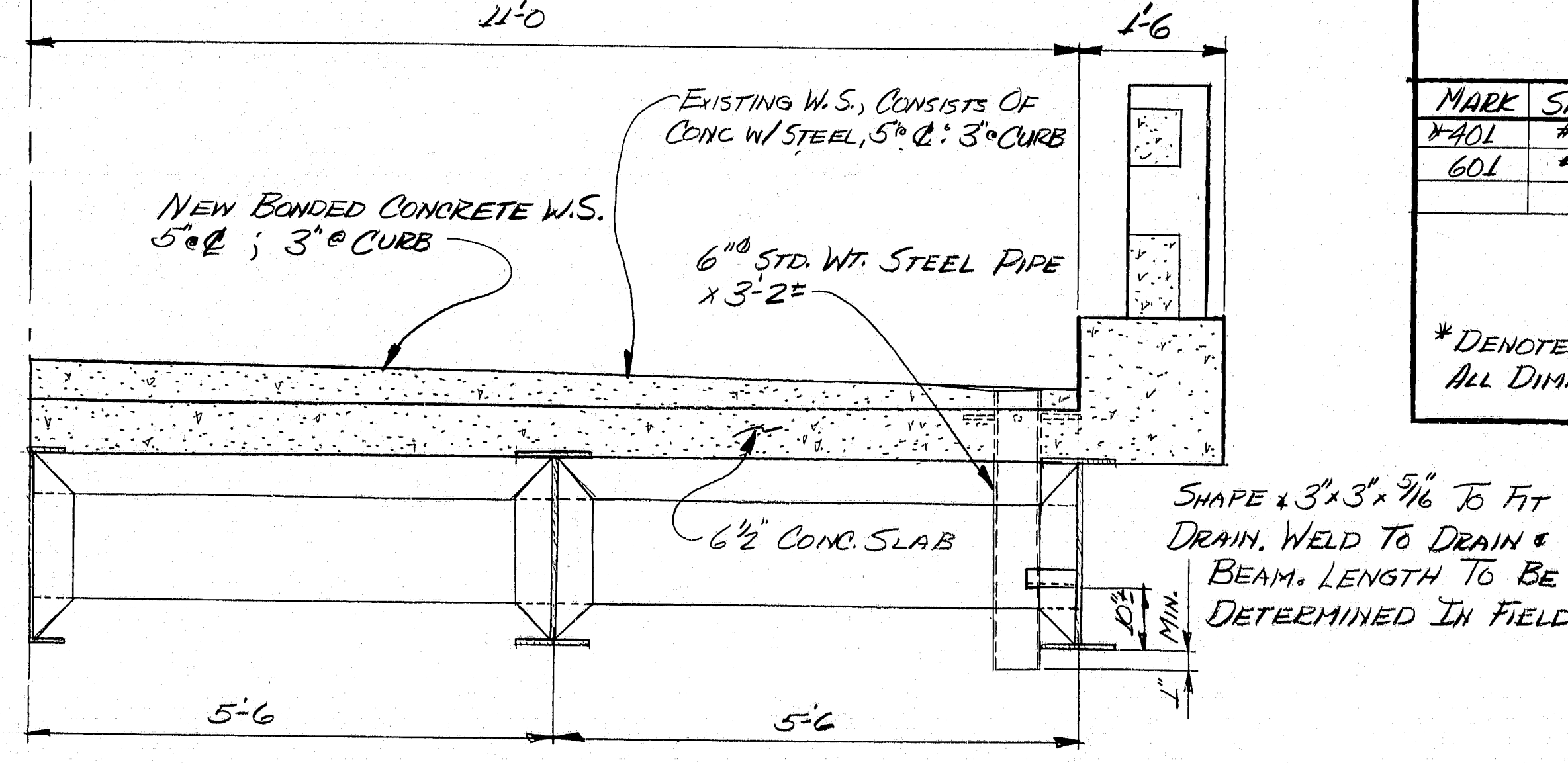
MATERIALS

13 1/4\"/>



MARK	SIZE	NO	LENGTH	LOCATION
*A01	*4	16	6'-2"	END POSTS - STREUP
G01	*6	24	3'-4"	END POSTS - VEET.

* DENOTES BENT BAR
ALL DIMENSIONS ARE OUT TO OUT OF BAR.
STEEL TO BE GRADE 40 OR 60.
EST. WT. = 188 LBS.



STATE OF MAINE
DEPARTMENT OF TRANSPORTATION
#3128
GREAT FARM BRIDGE
OVER
GREAT FARM BROOK
IN THE TOWN OF
JACKSON
IN
WALDO COUNTY
CONC. W.S., DRAINS, END POST, RAIL REPAIR
SHEET 1 OF 4 AUGUSTA, MAINE MAY 24, 1963

PROJECT DESIGN ENGINEER	DATE
BY	5-27-63
DESIGN DETAIL	
CHECKED	
REVISIONS	
FIELD CHANGES	

BROWNS 44132 45710

179:170

